

# OVERHEAD CLEARANCES FOR NEW CONSTRUCTION

INFORMATION SHEET

LOOK UP AND PLAN AHEAD TO WORK SAFELY AROUND POWER LINES



At Xcel Energy, safety is at the foundation of everything we do. Whether your project is a tree house, addition, single-family home, multi-family dwelling or commercial building, keeping a minimum safe distance from power lines is critical. If you are planning to build, renovate or do maintenance on a structure in our service territory, no matter how small or large the job, it's important to verify the location of overhead utility lines.

Keeping your distance from energized lines isn't just a safety rule. It can help you stay on schedule and budget. Federal and state laws require a safe workspace – now and through the long-term life of a building -- for construction and maintenance workers like window washers, masons or painters. The National Electric Safety Code specifies a minimum safe vertical and horizontal distance between buildings and power lines.

## Always contact us before construction

Start the process by applying for service through Xcel Energy's Builders Call Line. Visit [xcelenergy.com/InstallAndConnect](https://www.xcelenergy.com/InstallAndConnect), or call **800.628.2121**.

We will work with you to determine whether nearby power lines need to be de-energized, relocated and/or undergrounded before work is performed. Please specify if any of the following apply to your project.

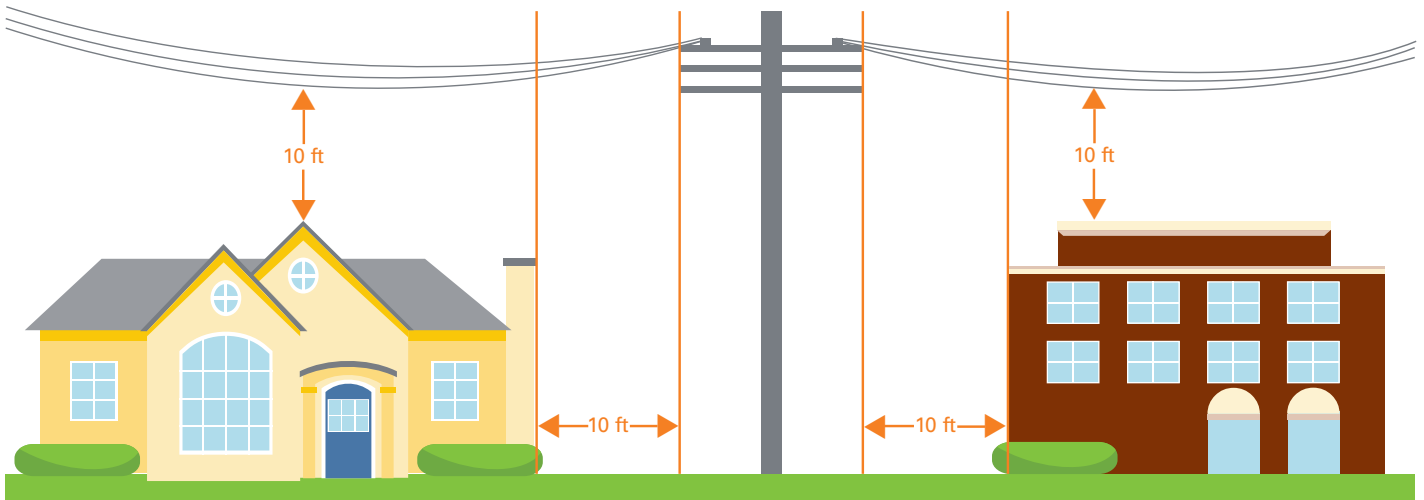
- If you plan to build or work on any structure closer than 10 feet to an overhead power or service line
- If any portion of your structure will be underneath a power line
- If your project will **ever** bring any part of the building, equipment or people (workers or occupants) closer than 10 feet to overhead lines
- If your project will **ever** require construction or maintenance equipment such as ladders, scaffolding, building tools or materials within 10 feet of overhead lines
- If a crane, derrick, aerial lift or similar equipment will cross or carry anything over or within 20 feet of overhead lines
- If you're not sure about the required clearance standards, or where power lines may be located



**OVERHEAD CLEARANCES FOR NEW CONSTRUCTION**

It is a requirement that all workers, materials and tools including scaffolding and ladders must stay at least 10 feet from overhead power lines. Minimum safe vertical and horizontal distances may be greater than 10 feet, depending on equipment used and power line voltage. Find more at

**[xcelenergy.com/start,\\_stop,\\_transfer/installing\\_and\\_connecting\\_service/site\\_requirements](https://www.xcelenergy.com/start,_stop,_transfer/installing_and_connecting_service/site_requirements)**.

**Minimum Overhead Clearances****Let us lend a hand**

You are responsible for knowing and complying with all federal, state and local laws and regulations and utility requirements. But we're here to help. Xcel Energy can assist you to navigate these rules and avoid costly delays, rework or fines. We will work with you and your local permitting authority to provide guidance and review designs for safety.

Let us help you keep your project moving forward smoothly, safely and on schedule. Visit **[xcelenergy.com/InstallAndConnect](https://www.xcelenergy.com/InstallAndConnect)**, or contact our Builders Call Line at **800.628.2121**.

To report an emergency, or if you need immediate assistance, please call our Electrical Outage line at **800.895.1999**. Don't forget — there may be other lines you can't see. Always call **811 before you dig** to verify the location of underground utilities.

