

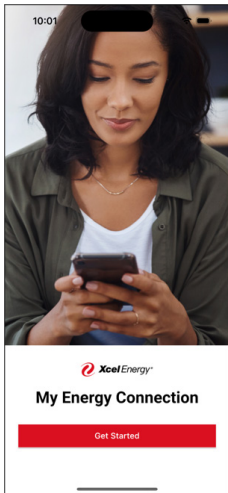
# MY ENERGY CONNECTION ENROLLMENT GUIDE



Welcome to My Energy Connection. With your smart meter and Wi-Fi capabilities, you can access new features like real-time energy use data and insights. Simply download the My Energy Connection app from either the Apple App Store or Google Play Store and follow the step-by-step instructions below to enroll.

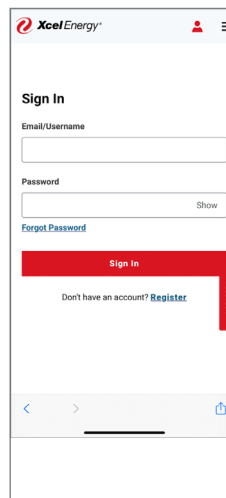
## 1 Getting Started

- When you first open the app, you'll see a "Get Started" screen.
- The "Get Started" button will take you to the My Account log-in screen.



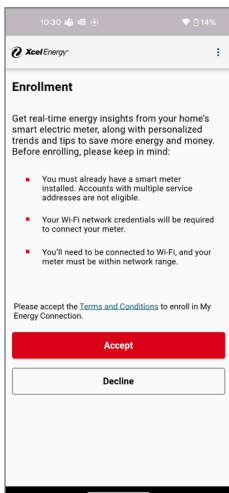
## 2 My Account Log-In

- Enter your My Account username and password to log in to the My Energy Connection application.



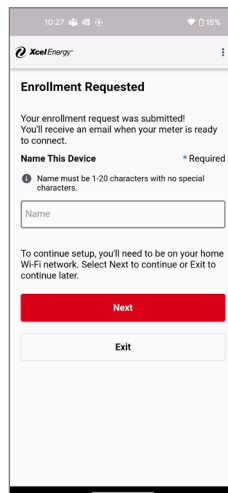
## 3 Enrollment – Terms & Conditions

- You will see a brief program description and eligibility requirements.
- You can review the Terms and Conditions before deciding to enroll or cancel, which will log you out and take you back to the "Get Started" screen.



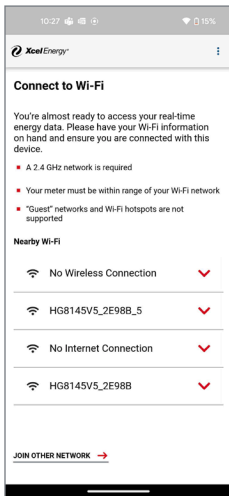
## 4 Name Device

- You will be given the option to begin setup of My Energy Connection.
- Enter a name for your device.



## 5 Connect to Wi-Fi (Android)

- On Android phones, you will be able to view available networks.
- Wi-Fi connection requirements will be displayed.
- Available networks are shown with a drop down to enter password.
- “Join Other Network” will be displayed to type in Wi-Fi information manually.

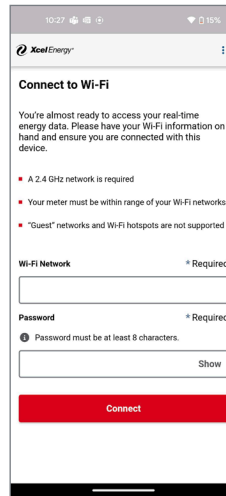


## 6 Connect to Wi-Fi (No Networks Available)

- This is shown if there are no available networks or if you want to find other networks.
- You will have the option to pull down to retry searching for available networks.

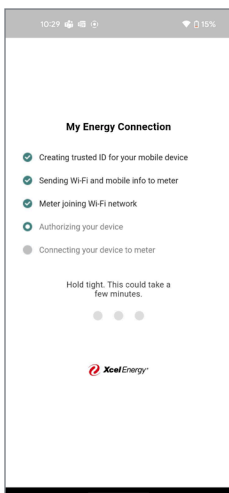
## 7 Connect to Wi-Fi (iOS)

- Manual entry of Wi-Fi network name and password is the default for iOS devices.
- Wi-Fi connection requirements will be displayed.



## 8 Meter Checklist

- This screen will show the progress status of Wi-Fi and device registration to the meter.
- Steps are checked off to indicate that credentials have been sent to the meter.
- If an error occurs, the user will be redirected to the appropriate troubleshooting screen.



## 9 Onboarding Feature Guide

- You will be guided through tutorial screens after the enrollment process.
- This guide is shown the first time you reach the Real-Time screen.
- Animation loops can be paused and replayed.
- The guide can be exited at any time.
- Swiping or clicking next will lead to the next screen.

