

- Legend**
- Block 1 - Q4 2018
 - Block 2 - Q1 2019
 - Block 3 - Q2 2019
 - Block 4 - Q3 2019
 - Block 5 - Q4 2019
 - Block 6 - Q1 2020
 - Block 7 - Q2 2020
 - Block 8 - Q3 2020
 - Block 9 - Q4 2020

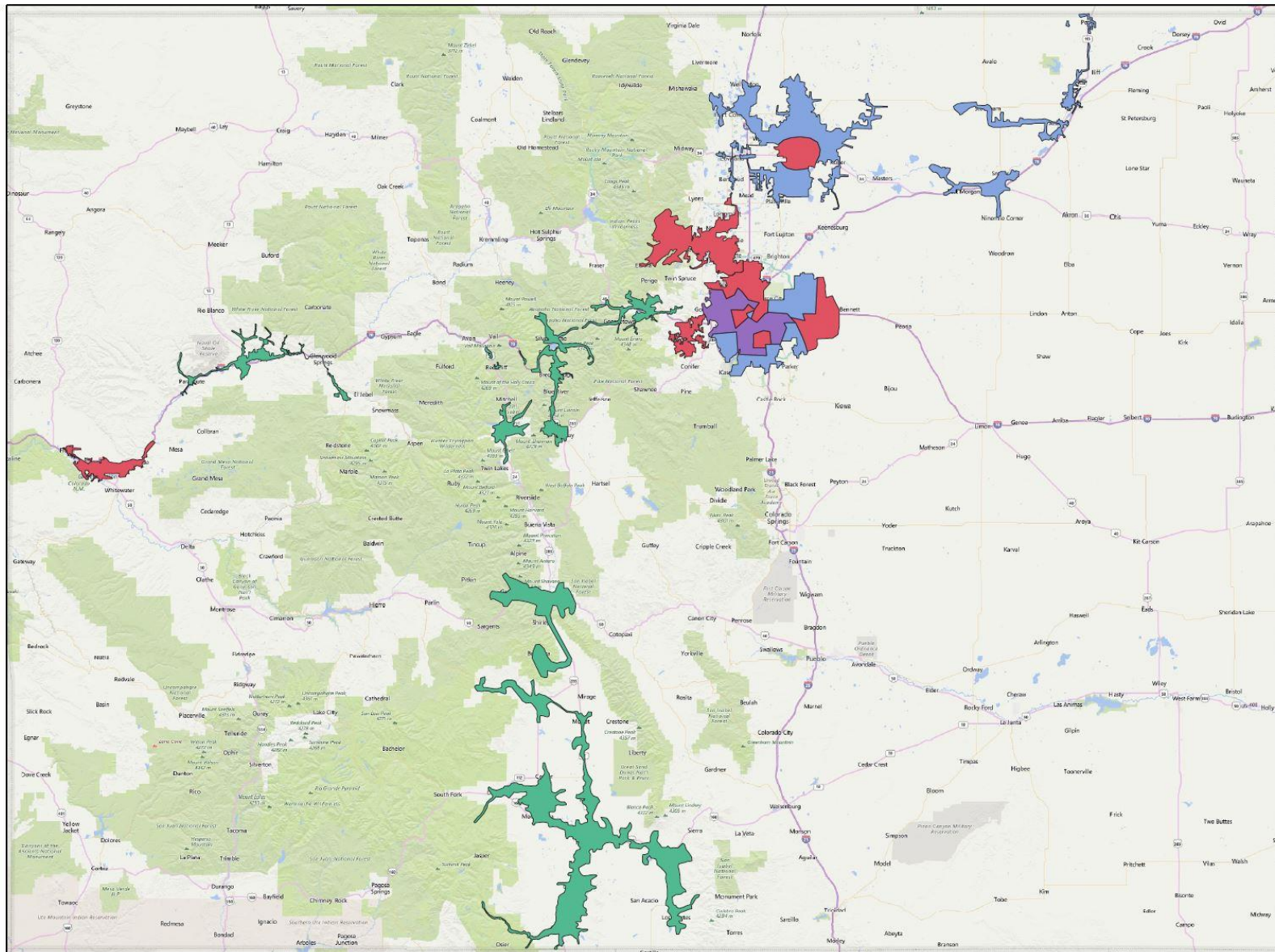
AMI Block Deployment



By: 201236
Date: 6/1/2016 1:22:29 PM

INTERNAL INFORMATION: DO NOT COPY OR DISTRIBUTE WITHOUT EXPRESS WRITTEN CONSENT FROM XCEL ENERGY. THIS MAP/DOCUMENT IS A TOOL TO ASSIST EMPLOYEES IN THE PERFORMANCE OF THEIR JOBS. YOUR PERSONAL SAFETY IS PROVIDED FOR BY USING SAFETY PRACTICES, PROCEDURES AND EQUIPMENT AS DESCRIBED IN THE SAFETY TRAINING PROGRAMS, MANUALS AND SIGNS.

DISCLAIMER: THERE ARE NO REPRESENTATIONS OR WARRANTIES (EXPRESS OR IMPLIED) ABOUT THE ACCURACY OF THIS PRINT. THIS PRINT IS PROVIDED WITH NO CLAIM AS TO PRINT COMPLETENESS, TIMELINESS, ACCURACY OF CONTENT OR USEFULNESS. STATE LAW REQUIRES ANYONE DIGGING, GRADING, OR EXCAVATING TO OBTAIN A PRIOR FIELD LOCATE OF ALL UTILITIES. THIS PRINT DOES NOT DISCHARGE THIS REQUIREMENT. THE COMPANY AND ITS AFFILIATES ASSUME NO RESPONSIBILITY OR LIABILITY FOR THE RECIPIENT'S USE (OR ANY OTHER PARTIES USE) OF THE PRINT, INCLUDING THE RECIPIENT'S INTENDED PURPOSE IN USING THIS PRINT. NO COMPANY EMPLOYEE OR OTHER PARTY HAS BEEN AUTHORIZED TO PROVIDE THIS PRINT FOR PLANNING OR ESTIMATING PURPOSES; RELY ON THIS PRINT AT YOUR OWN RISK. BY ACCEPTING THIS PRINT, THE RECIPIENT & ANY OTHER PARTY RECEIVING A COPY OF THE PRINT ACKNOWLEDGES AND AGREES TO THIS DISCLAIMER. For All Field Locates Call 811.



Scale: 1:1750000

0 48 mi

Legend

- 2016
- 2017
- 2018
- 2019

FAN Rollout

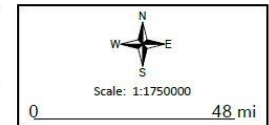
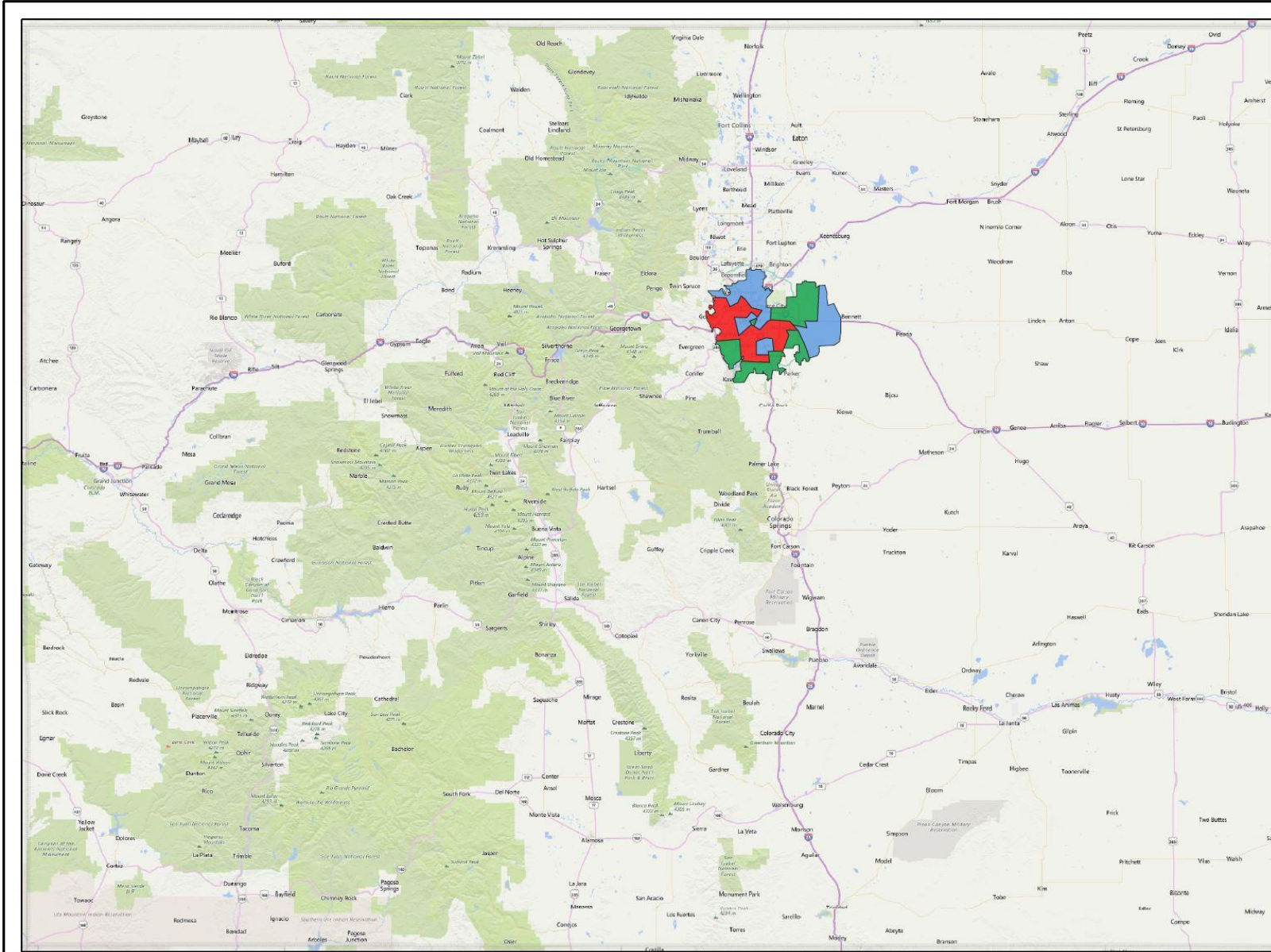


By: 201236

Date: 6/20/2016 10:54:46 AM

INTERNAL INFORMATION: DO NOT COPY OR DISTRIBUTE WITHOUT EXPRESS WRITTEN CONSENT FROM XCEL ENERGY
 THIS MAP/DOCUMENT IS A TOOL TO ASSIST EMPLOYEES IN THE PERFORMANCE OF THEIR JOBS. YOUR PERSONAL SAFETY IS PROVIDED FOR BY USING SAFETY PRACTICES, PROCEDURES AND EQUIPMENT AS DESCRIBED IN THE SAFETY TRAINING PROGRAMS, MANUALS AND SPANS.

DISCLAIMER: THERE ARE NO REPRESENTATIONS OR WARRANTIES (EXPRESS OR IMPLIED) ABOUT THE ACCURACY OF THIS PRINT. THIS PRINT IS PROVIDED WITH NO CLAIM AS TO PRINT COMPLETENESS, TIMELINESS, ACCURACY OF CONTENT OR USEFULNESS. STATE LAW REQUIRES ANYONE DIGGING, GRADING, OR EXCAVATING TO OBTAIN A PRIOR FIELD LOCATE OF ALL UTILITIES. THIS PRINT DOES NOT DISCHARGE THIS REQUIREMENT. THE COMPANY AND ITS AFFILIATES ASSUME NO RESPONSIBILITY OR LIABILITY FOR THE RECIPIENT'S USE (OR ANY OTHER PARTIES USE) OF THE PRINT, INCLUDING THE RECIPIENT'S INTENDED PURPOSE IN USING THIS PRINT. NO COMPANY EMPLOYEE OR OTHER PARTY HAS BEEN AUTHORIZED TO PROVIDE THIS PRINT FOR PLANNING OR ESTIMATING PURPOSES; RELY ON THIS PRINT AT YOUR OWN RISK. BY ACCEPTING THIS PRINT, THE RECIPIENT & ANY OTHER PARTY RECEIVING A COPY OF THE PRINT ACKNOWLEDGES AND AGREES TO THIS DISCLAIMER. For All Field Locates Call 811.



Legend

- 2017
- 2018
- 2019

IVVO

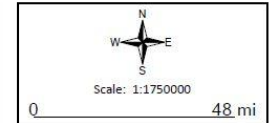
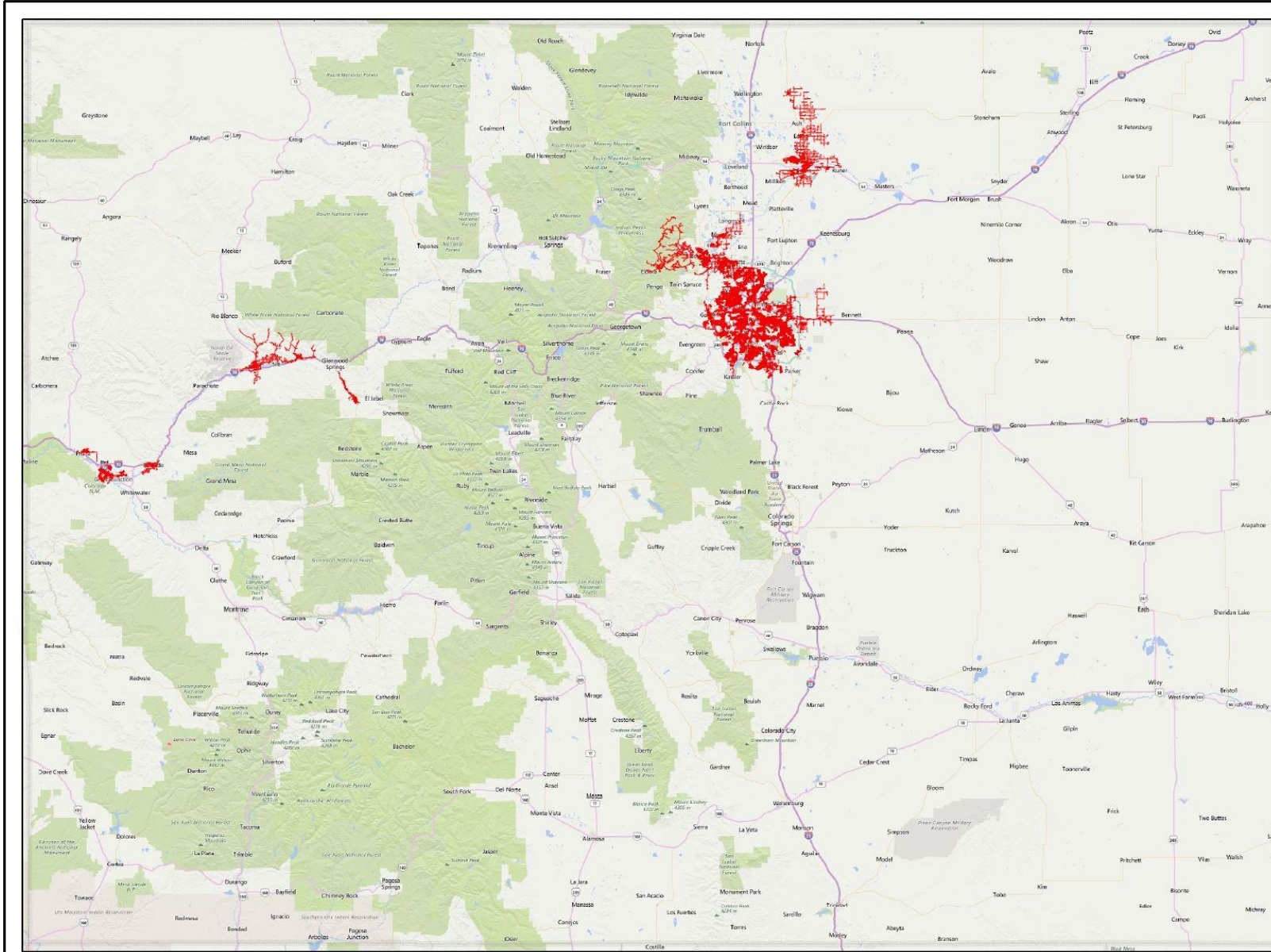


By: 201236
Date: 6/20/2016 10:33:06 AM

INTERNAL INFORMATION: DO NOT COPY OR DISTRIBUTE WITHOUT EXPRESS WRITTEN CONSENT FROM XCEL ENERGY

THIS MAP/DOCUMENT IS A TOOL TO ASSIST EMPLOYEES IN THE PERFORMANCE OF THEIR JOBS. YOUR PERSONAL SAFETY IS PROVIDED FOR BY USING SAFETY PRACTICES, PROCEDURES AND EQUIPMENT AS DESCRIBED IN THE SAFETY TRAINING PROGRAMS, MANUALS AND SPMS.

DISCLAIMER: THERE ARE NO REPRESENTATIONS OR WARRANTIES (EXPRESS OR IMPLIED) ABOUT THE ACCURACY OF THIS PRINT. THIS PRINT IS PROVIDED WITH NO CLAIM AS TO PRINT COMPLETENESS, TIMELINESS, ACCURACY OF CONTENT OR USEFULNESS. STATE LAW REQUIRES ANYONE DIGGING, GRADING, OR EXCAVATING TO OBTAIN A PRIOR FIELD LOCATE OF ALL UTILITIES. THIS PRINT DOES NOT DISCHARGE THIS REQUIREMENT. THE COMPANY AND ITS AFFILIATES ASSUME NO RESPONSIBILITY OR LIABILITY FOR THE RECIPIENT'S USE (OR ANY OTHER PARTIES USE) OF THE PRINT, INCLUDING THE RECIPIENT'S INTENDED PURPOSE IN USING THIS PRINT. NO COMPANY EMPLOYEE OR OTHER PARTY HAS BEEN AUTHORIZED TO PROVIDE THIS PRINT FOR PLANNING OR ESTIMATING PURPOSES. RELY ON THIS PRINT AT YOUR OWN RISK. BY ACCEPTING THIS PRINT, THE RECIPIENT & ANY OTHER PARTY RECEIVING A COPY OF THE PRINT ACKNOWLEDGES AND AGREES TO THIS DISCLAIMER. For All Field Locates Call 811.



Legend

- FLISR/FLP Feeders
- FLISR Feeder Geos

FLISR/FLP Feeder Locations



By: 201236
Date: 6/20/2016 9:01:10 AM

INTERNAL INFORMATION: DO NOT COPY OR DISTRIBUTE WITHOUT EXPRESS WRITTEN CONSENT FROM XCEL ENERGY
THIS MAP/DOCUMENT IS A TOOL TO ASSIST EMPLOYEES IN THE PERFORMANCE OF THEIR JOBS. YOUR PERSONAL SAFETY IS PROVIDED FOR BY USING SAFETY PRACTICES, PROCEDURES AND EQUIPMENT AS DESCRIBED IN THE SAFETY TRAINING PROGRAMS, MANUALS AND SPMS.
DISCLAIMER: THERE ARE NO REPRESENTATIONS OR WARRANTIES (EXPRESS OR IMPLIED) ABOUT THE ACCURACY OF THIS PRINT. THIS PRINT IS PROVIDED WITH NO CLAIM AS TO PRINT COMPLETENESS, TIMELINESS, ACCURACY OF CONTENT OR USEFULNESS. STATE LAW REQUIRES ANYONE DIGGING, GRADING, OR EXCAVATING TO OBTAIN A PRIOR FIELD LOCATE OF ALL UTILITIES. THIS PRINT DOES NOT DISCHARGE THIS REQUIREMENT. THE COMPANY AND ITS AFFILIATES ASSUME NO RESPONSIBILITY OR LIABILITY FOR THE RECIPIENT'S USE (OR ANY OTHER PARTIES USE) OF THE PRINT, INCLUDING THE RECIPIENT'S INTENDED PURPOSE IN USING THIS PRINT. NO COMPANY EMPLOYEE OR OTHER PARTY HAS BEEN AUTHORIZED TO PROVIDE THIS PRINT FOR PLANNING OR ESTIMATING PURPOSES. RELY ON THIS PRINT AT YOUR OWN RISK. BY ACCEPTING THIS PRINT, THE RECIPIENT & ANY OTHER PARTY RECEIVING A COPY OF THE PRINT ACKNOWLEDGES AND AGREES TO THIS DISCLAIMER. For All Field Locates Call 811.