

PLEASE READ CAREFULLY

TREE PRUNING HELPS KEEP YOUR POWER ON

Dear Xcel Energy Customer,

Within the next few weeks, qualified line clearance tree crews will be working to clear trees from the power lines in your neighborhood, at no cost to you. If you have any questions, please call the number below within 48 hours to discuss the work. **OTHERWISE EXPECT CREWS TO ARRIVE WITHIN A FEW WEEKS.**

Some of the trees on your property near the power lines require pruning to maintain adequate tree clearance. At times, tree removal is preferred. If this is the case, you will receive additional information. Xcel Energy has the responsibility to maintain adequate distance between trees and high-voltage electric lines because trees can conduct electricity. This clearance is absolutely necessary to ensure safe and reliable electric service. We appreciate your cooperation as we work to provide you with reliable electric service.

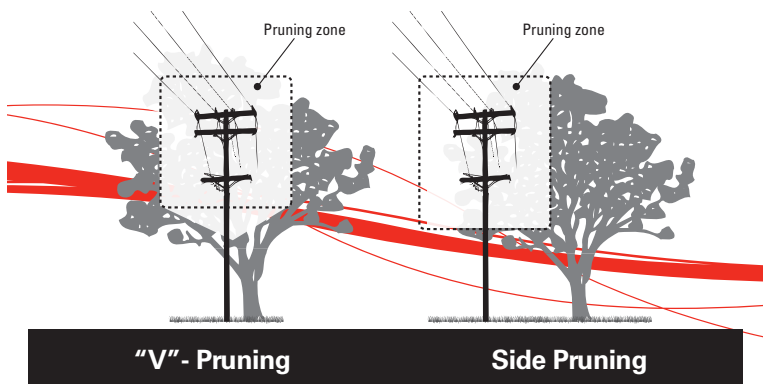
Please call and notify us if:

- You wish to discuss the necessary tree clearance from the power lines.
- You have a pet and/or locked gate, and need advanced notice.
- You do not own the property.

***NOTE: DO NOT** attempt to work on any tree that could come into contact with an energized conductor. It may be against the law and must be done by a qualified line clearance professional.

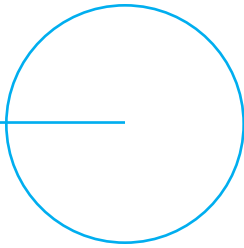
For more information, or to obtain a copy of our *Plant a Better Future* brochure so you can learn more about tree planting and selection, visit us at xcelenergy.com/trees or call **1-800-895-4999**.

Trees will be pruned in a manner to direct future growth away from power lines.



***DO NOT ATTEMPT TO WORK ON THESE TREES ON YOUR OWN. TREE WORK NEAR POWER LINES IS DANGEROUS.**

FPO - Adhesive Strip



Work Description:

**Thanks for your cooperation!
Vegetation Management, Xcel Energy**

Contractor:

Contact Name:

Date:

Phone Number:



Printed on recycled paper.